

# PORTFOLIO

Jehlani Pace

# CONTENTS



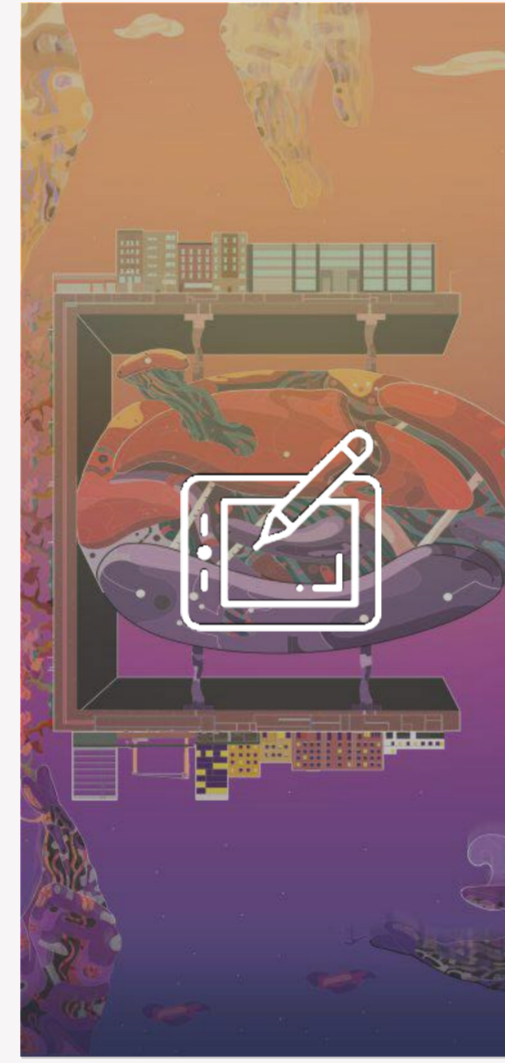
Digital Bay

4-13



BRICK 18

14-29



Artwork

30-31

**“Nature + Digital Fabrication”**

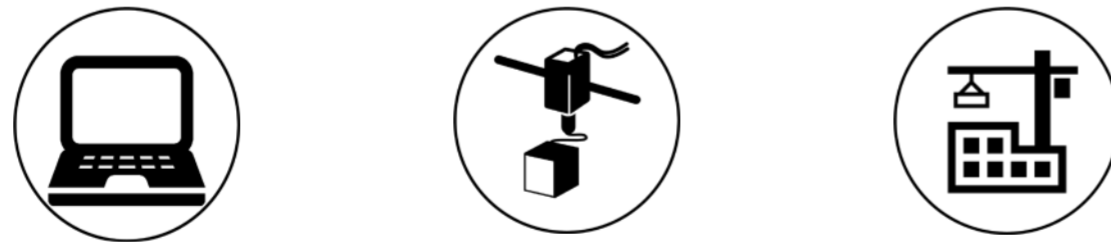
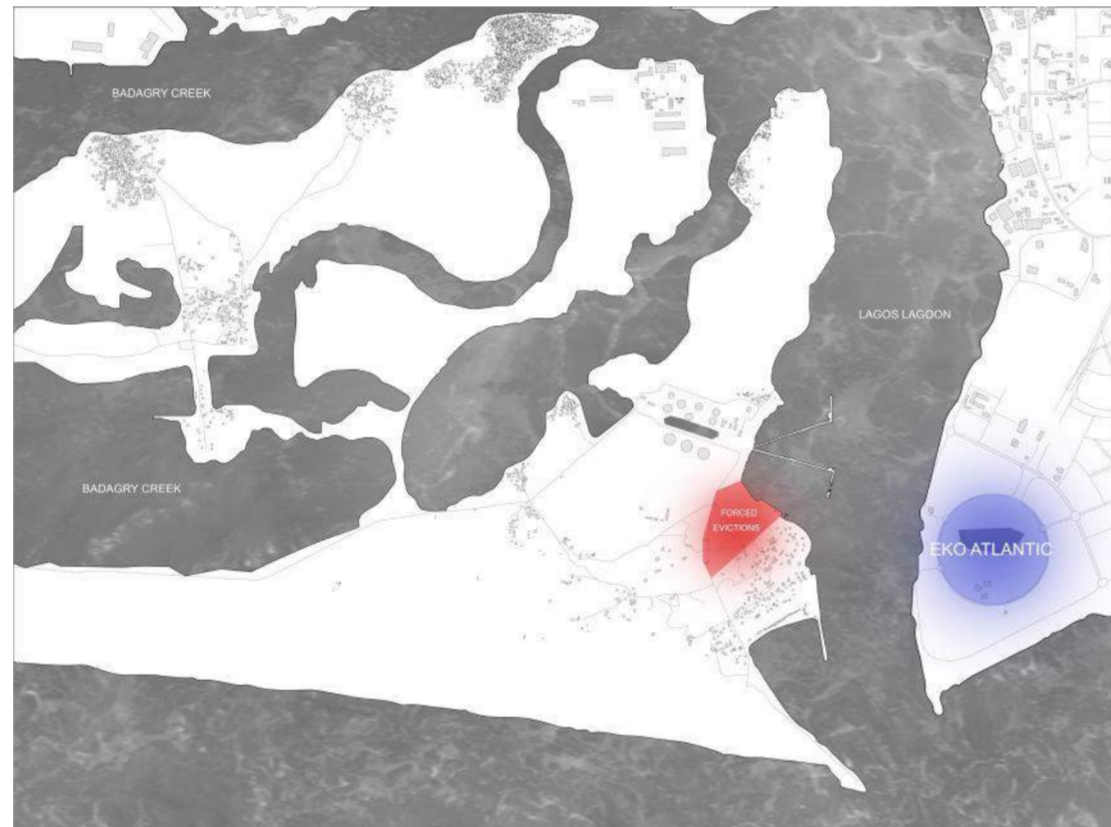
(Photo highlights community garden space & construction of typical housing space)



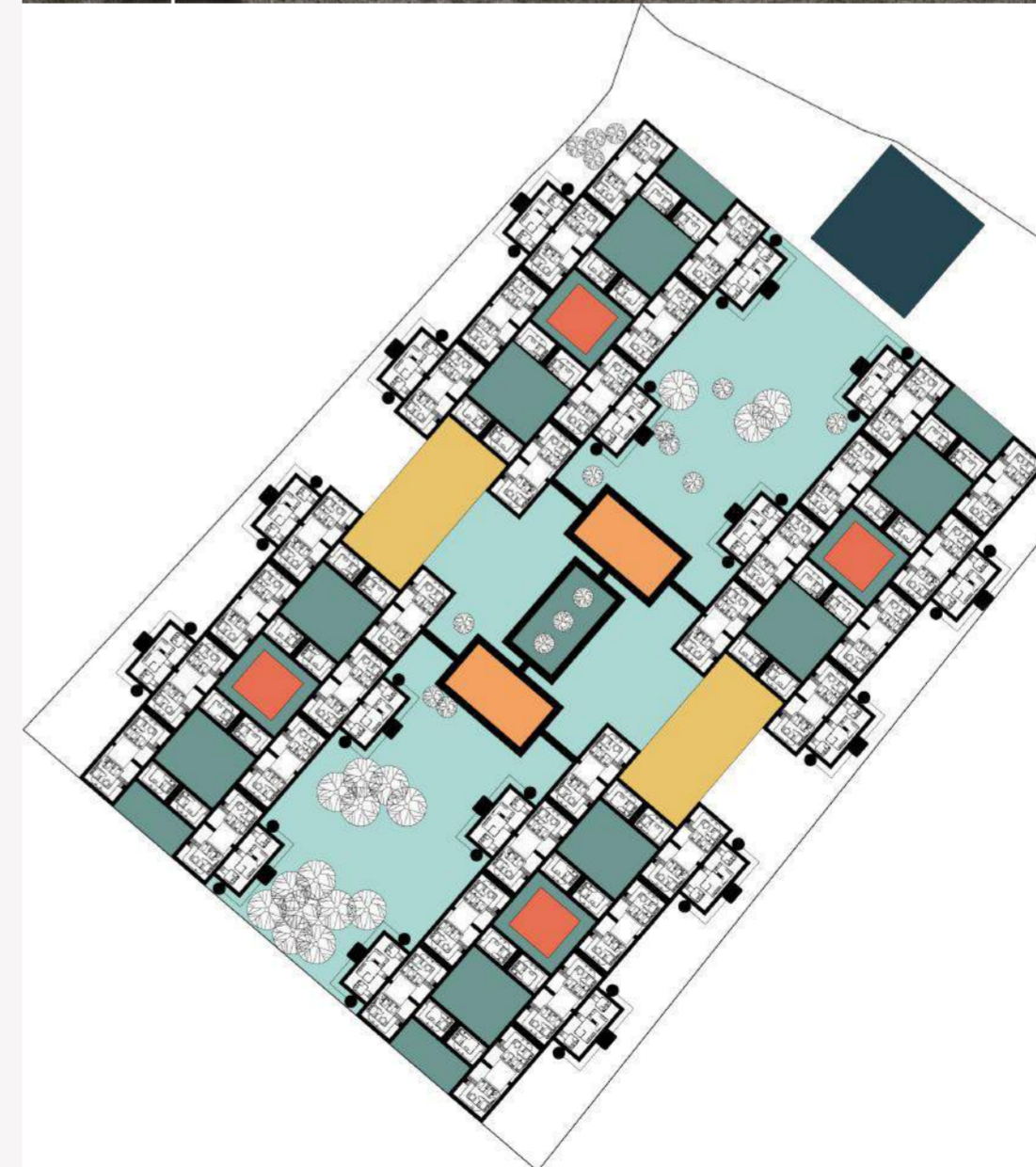
**DIGITAL BAY**

- **Recognition:** (Nomination) Graduate Design Award
- **Studio:** (2020) Fall Arch 574
- **Project Location:** (Tarkwa Bay) Lagos, Nigeria
- **Software:** CAD & Rhino3D (Lumion/Vray)

On December 21st 2019 the Lagos military forcefully evicted over 4500 people from the island of Tarkwa Bay. The reason why the Lagos government decided to do this was because Tarkwa Bay is viewed as premium waterfront real estate. With this action, the Lagos government had once again strained the relationship that they had with the citizens of the city. “Digital Bay” is a housing project centered around digital fabrication. The overall concept is not only meant to help Lagos create jobs, homes, and better living conditions but to be an example of the great things that can happen when a government actively helps its citizens.



Initial Concept Render



The conceptual design that was originally created was intended to show a sense of community. Shared spaces are offered as opportunities to grow food and encourage socialization. I wanted to maintain this idea throughout my design so I used this image as a starting point to help guide my project as I researched the digital fabrication process.

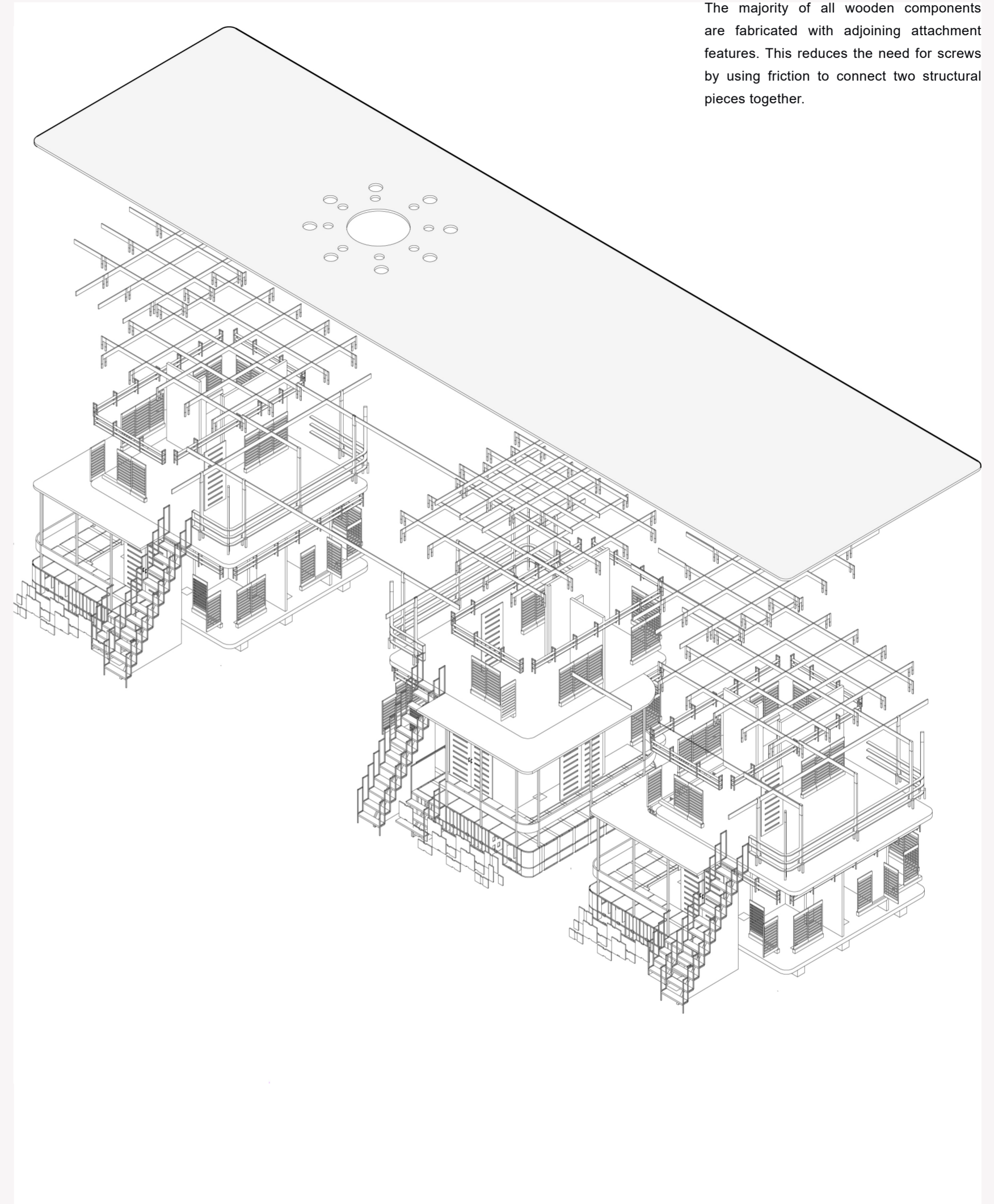
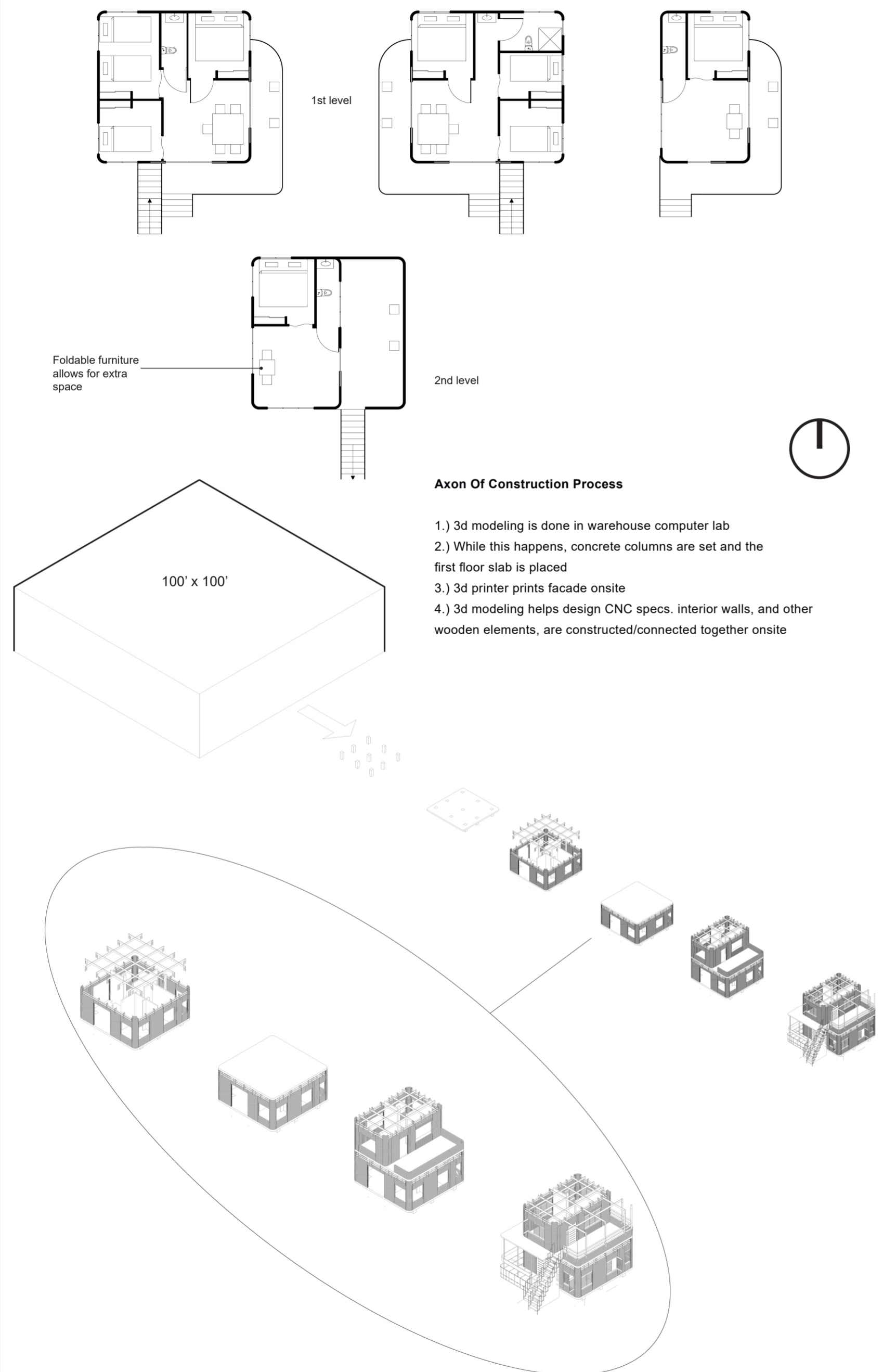
- The overall housing plan is (462,950.6 sqft)
- 200 homes will be built (housing 1,000+ people)

- SITE PLAN KEY**
1. Solar panel clusters
  2. Community centers
  3. Schools
  4. Warehouse
  5. Farming
  6. Private garden spaces



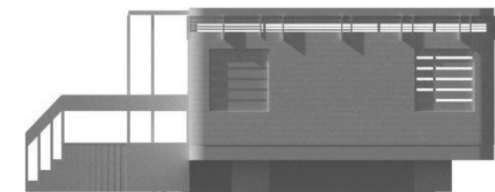
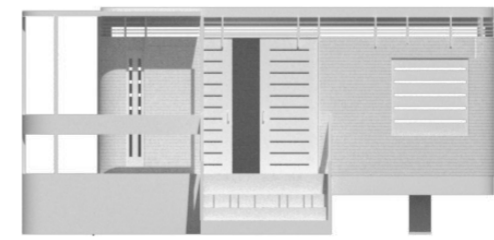
**“Destruction Becomes Restoration”**

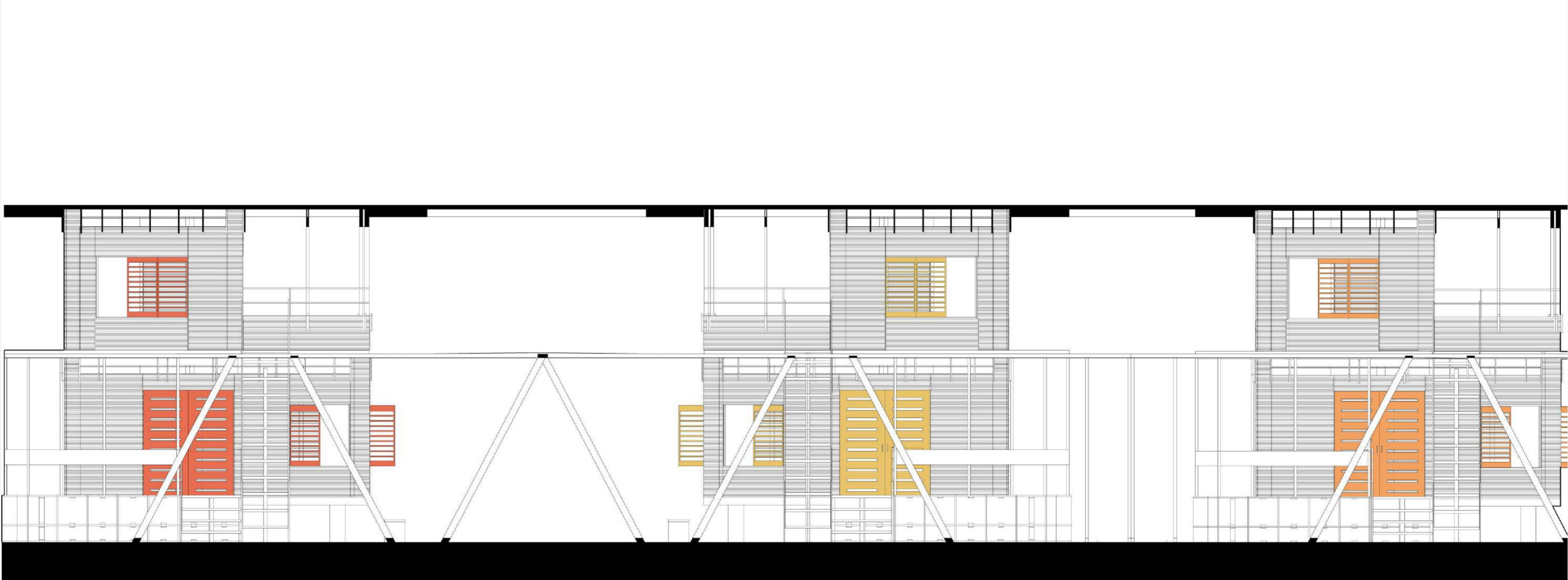
(Photo highlights community after forced evictions. Below that image is a conceptual proposal)



Typical 3d house final model (front view)

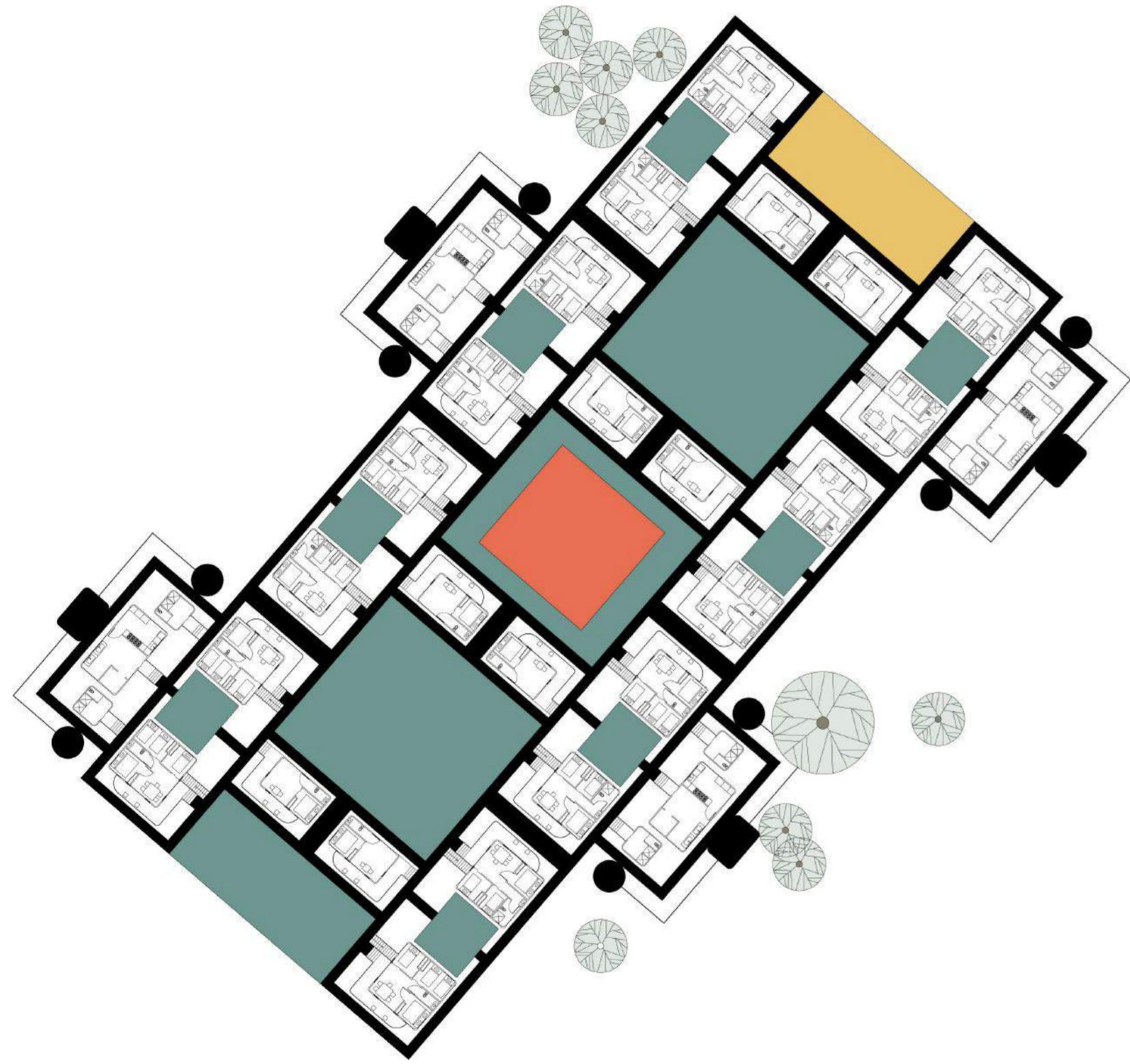
Typical 3d house final model (side view)





Elevation





Housing in "Digital Bay" is separated into 4 sub communities. Each one of these communities houses 50 homes and has one community center and multiple garden spaces. These spaces can be converted into social gardens and personal farming land.



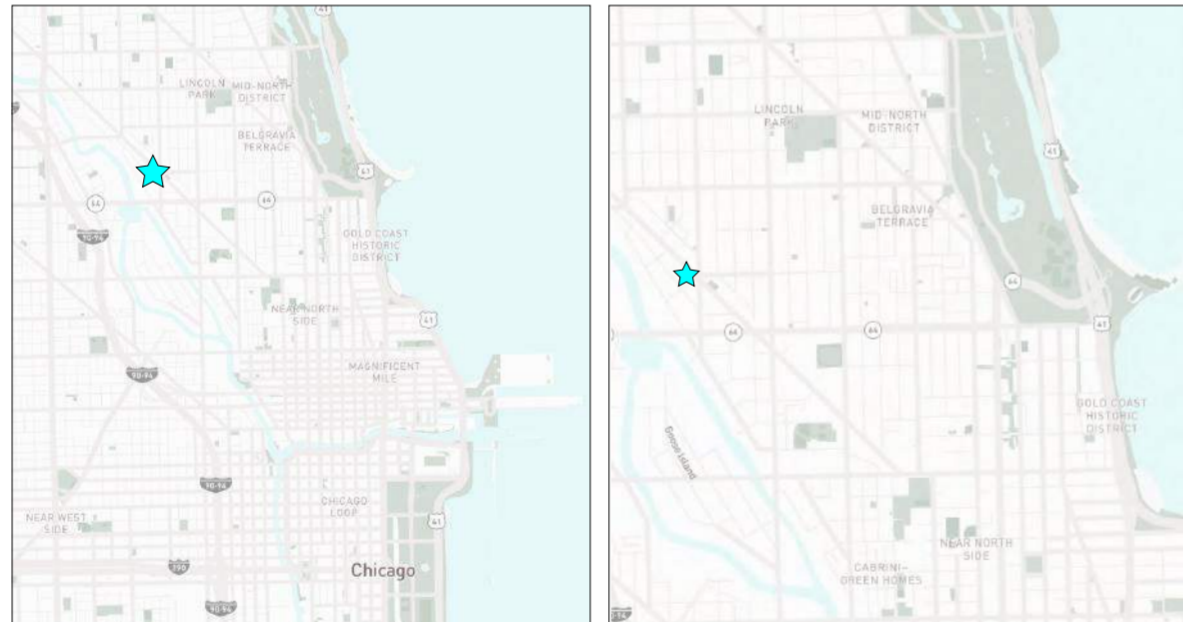




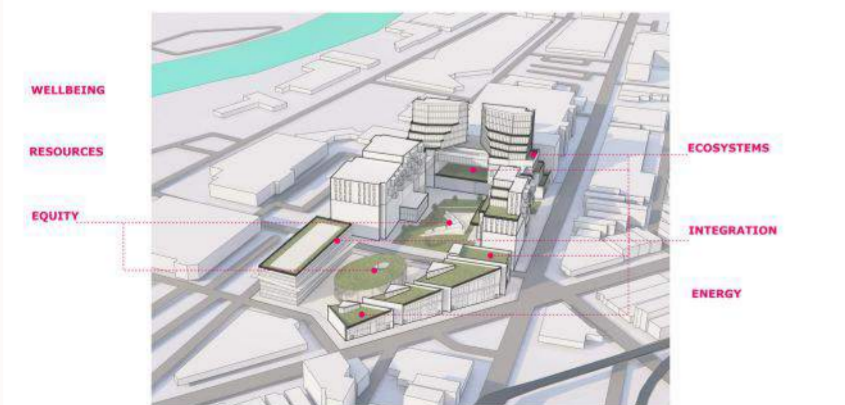
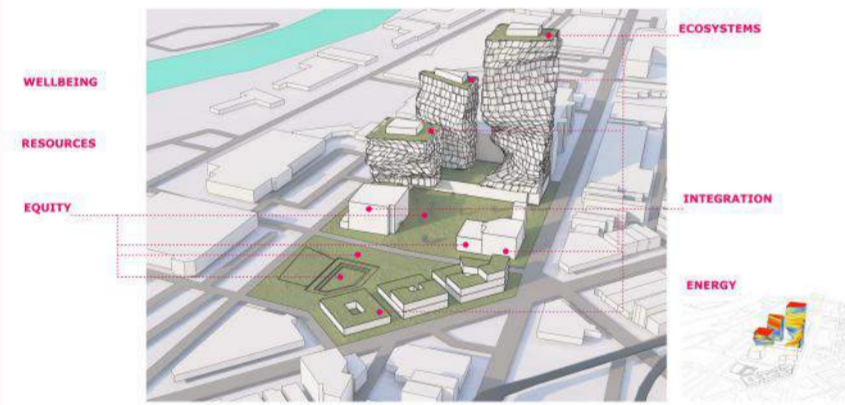
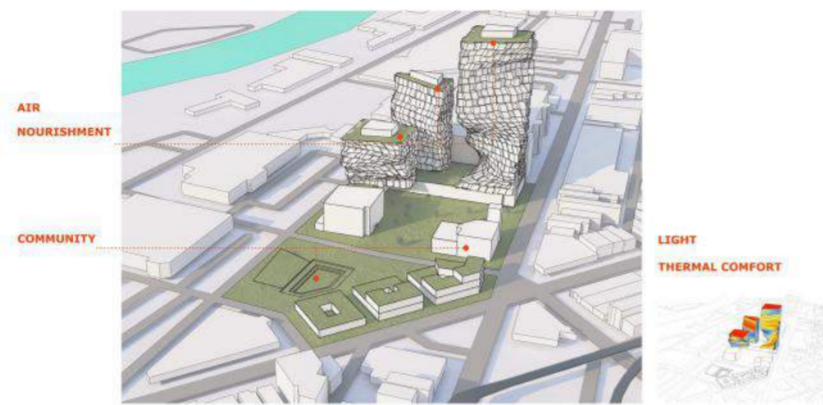
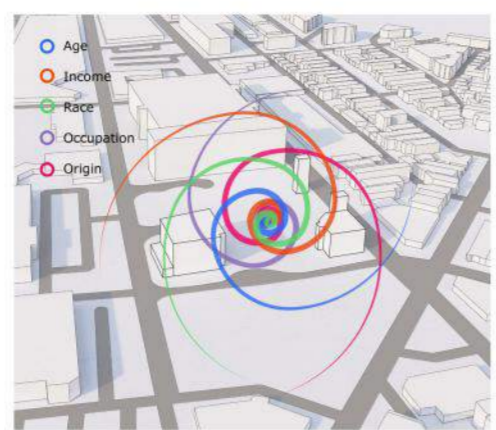
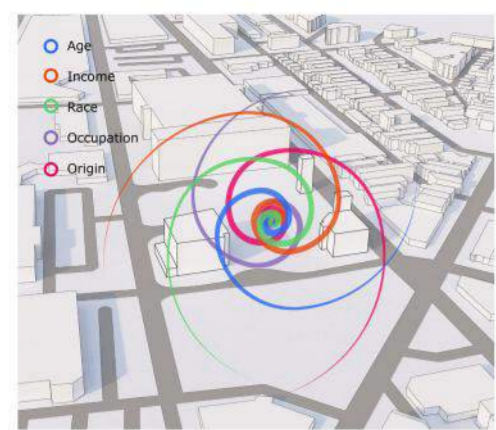
## BRICK 18

- **Recognition:** (Honorable Mention) Graduate Design Award
- **Studio:** (2020) Spring Arch 572
- **Project Location:** Chicago, IL
- **Software:** CAD, Rhino3D, & Revit (Lumion/ Vray)
- **Team:** (DJH) (Diego Huacuja, Jehlani Pace, and Hakeem Barre)
- **Individual Responsibilities:** Create Conceptual idea, apartment plans, and green space amenity concept., & renders

Located in the "Clybourn Corridor", BRICK 18 is a residential housing concept meant to redefine how we view housing and how we view community engagement.

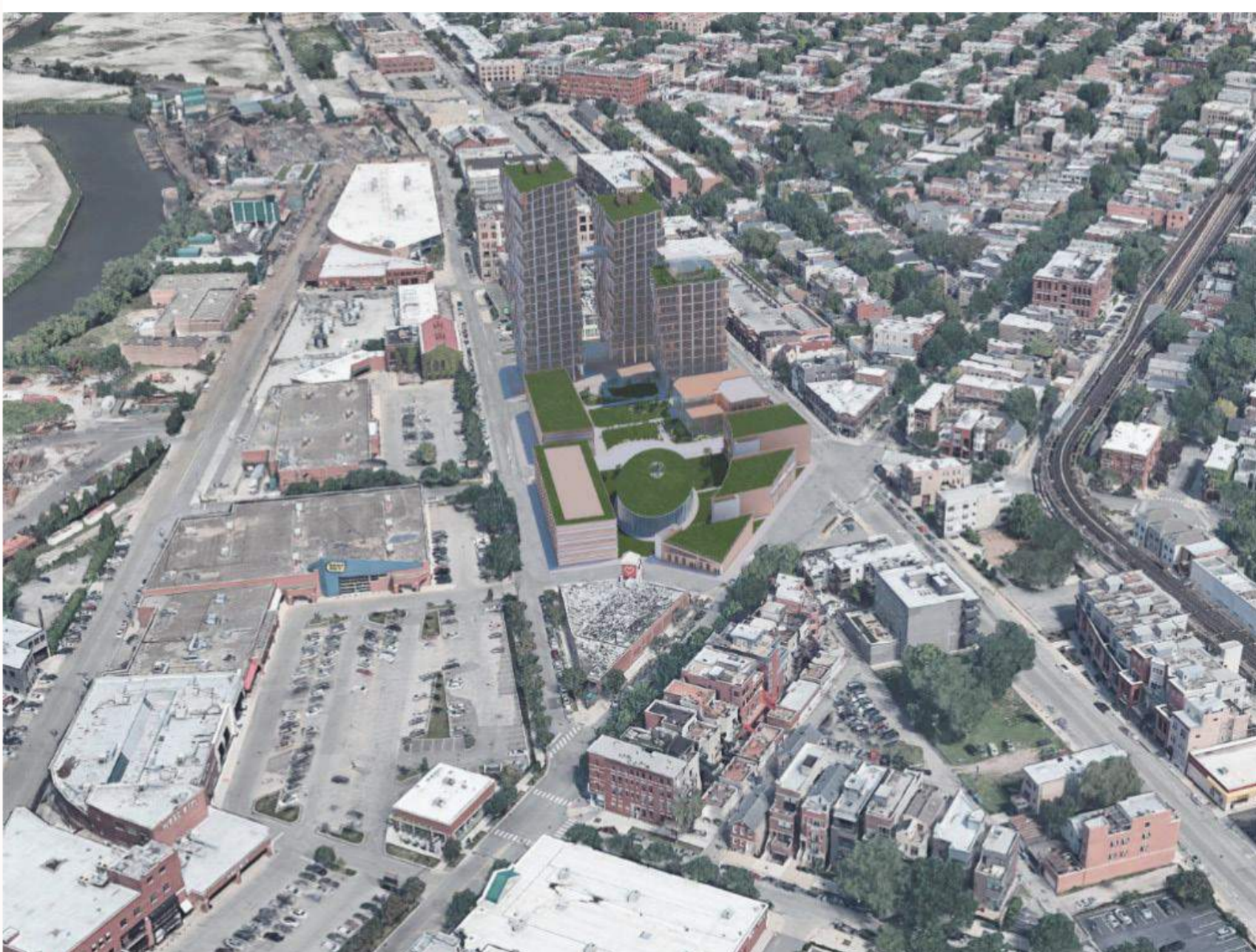
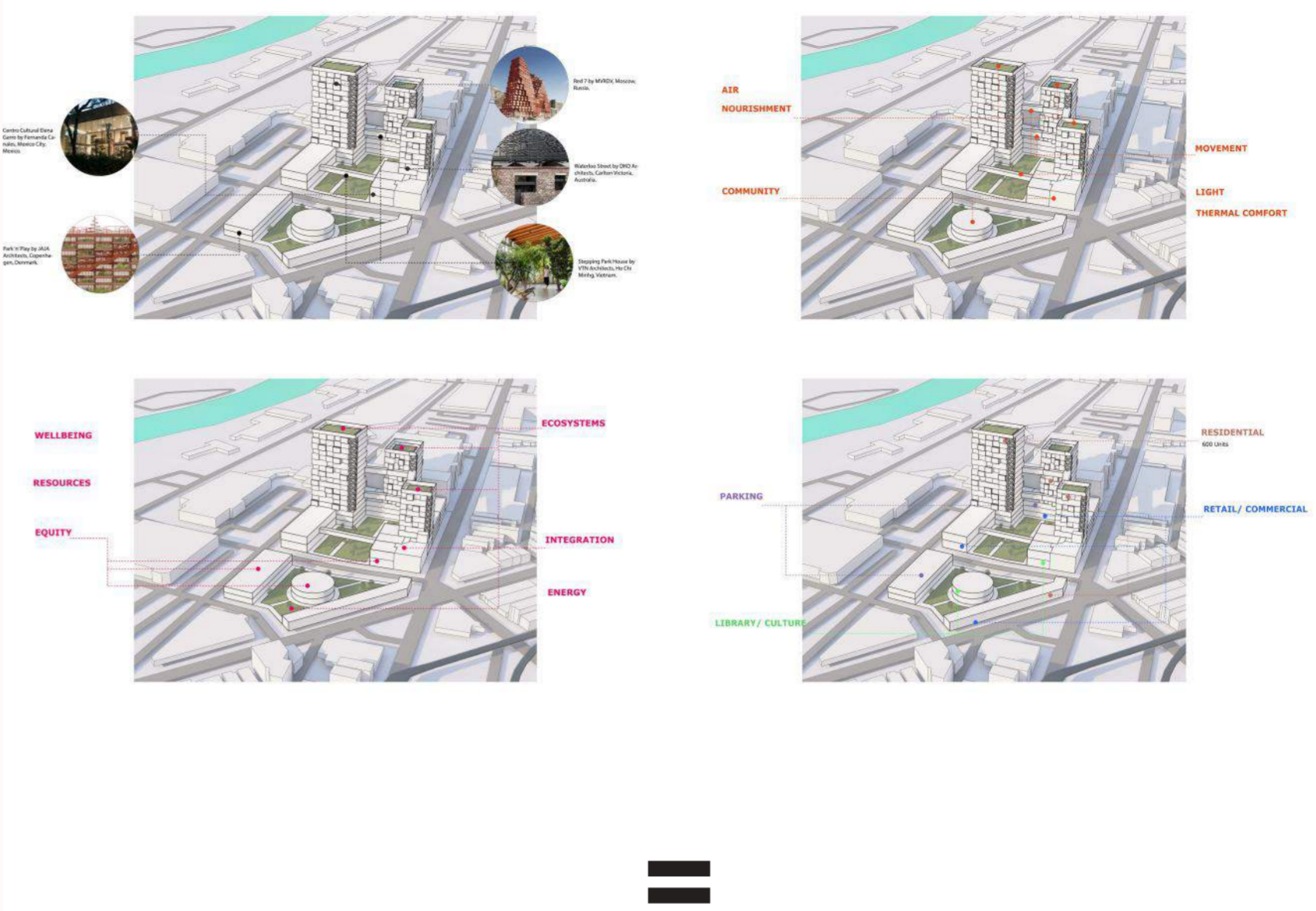


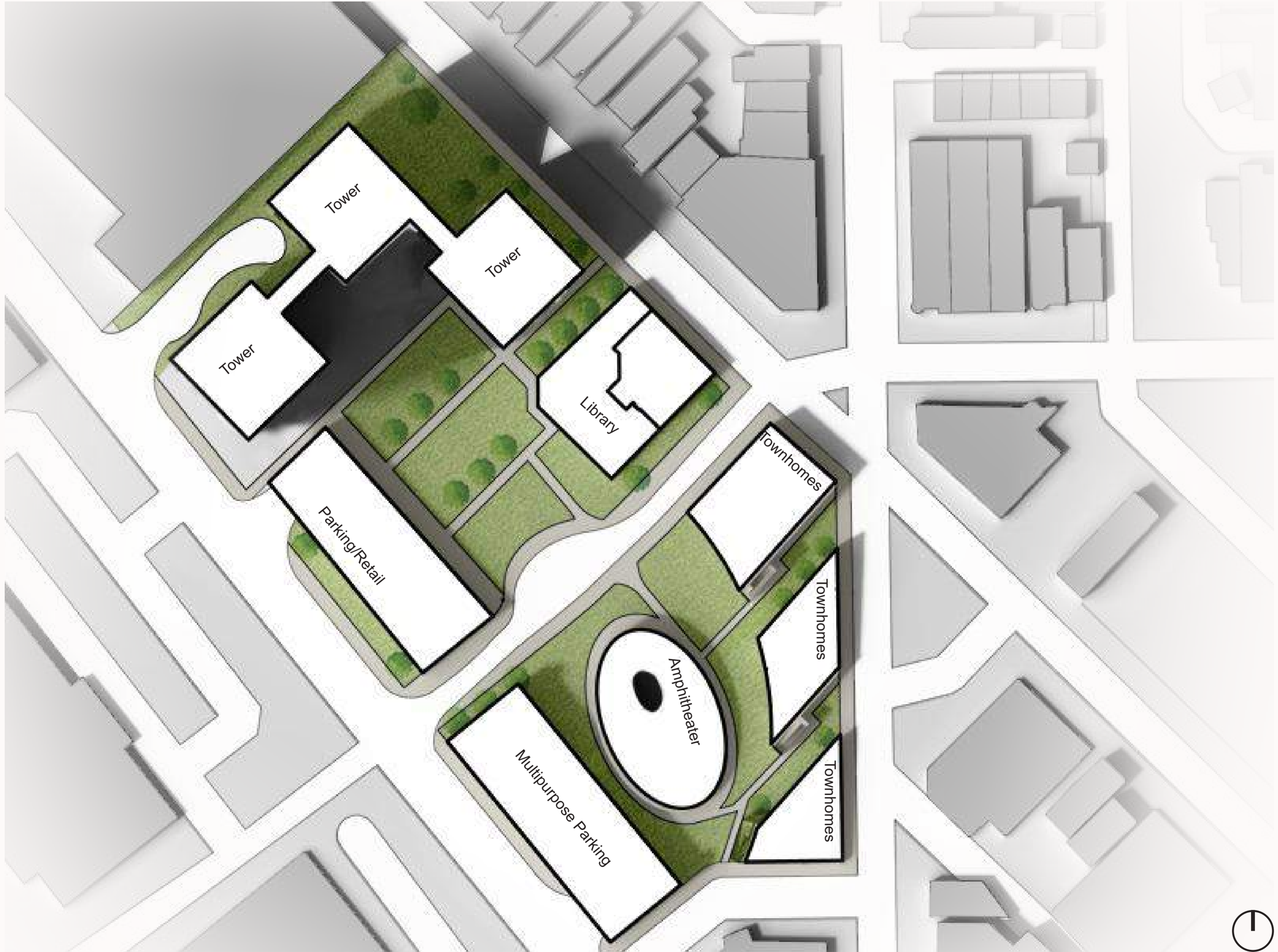


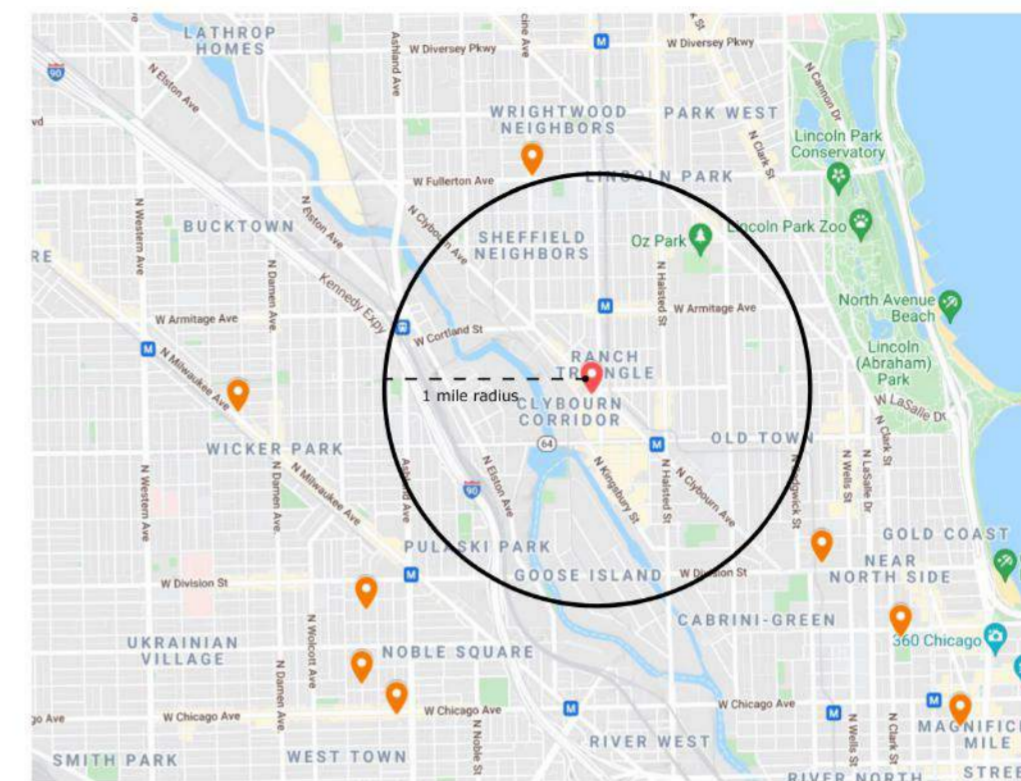


Cascading

Connection







Self identity



Community identity



Access



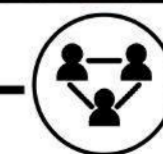
Community involvement



Growing process



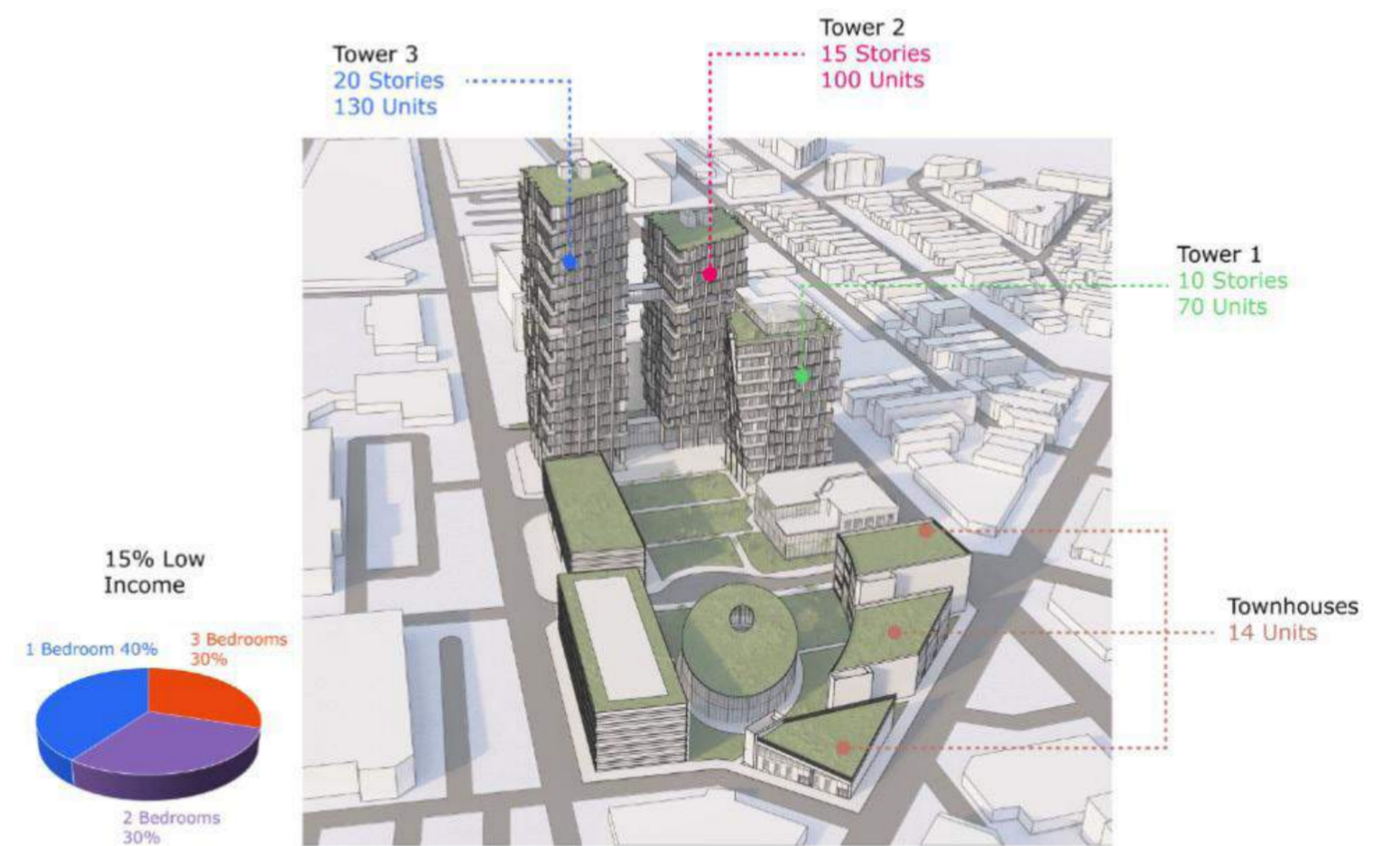
Shipped to other neighborhoods



Create community networks for food distribution



The library space is a repurposed building previously onsite with added architectural space.



Clybourn Ave Elevation



Marcey Elevation











pacehjehlani@gmail.com  
(773) 627 1502